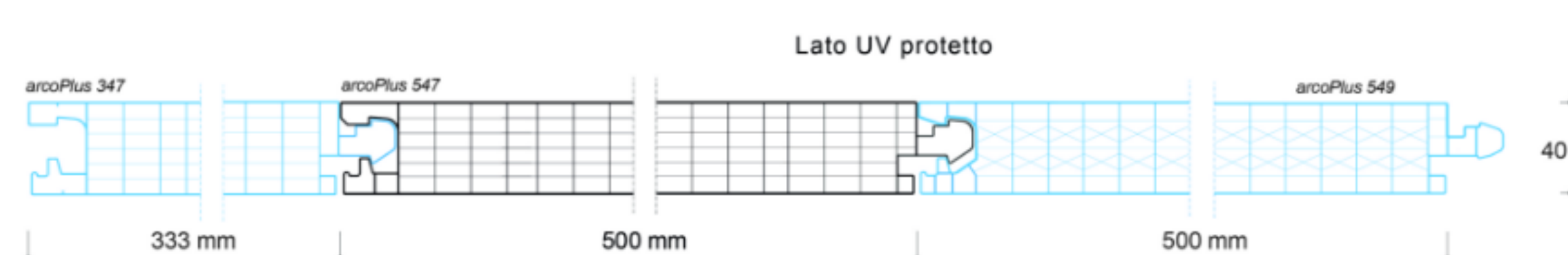
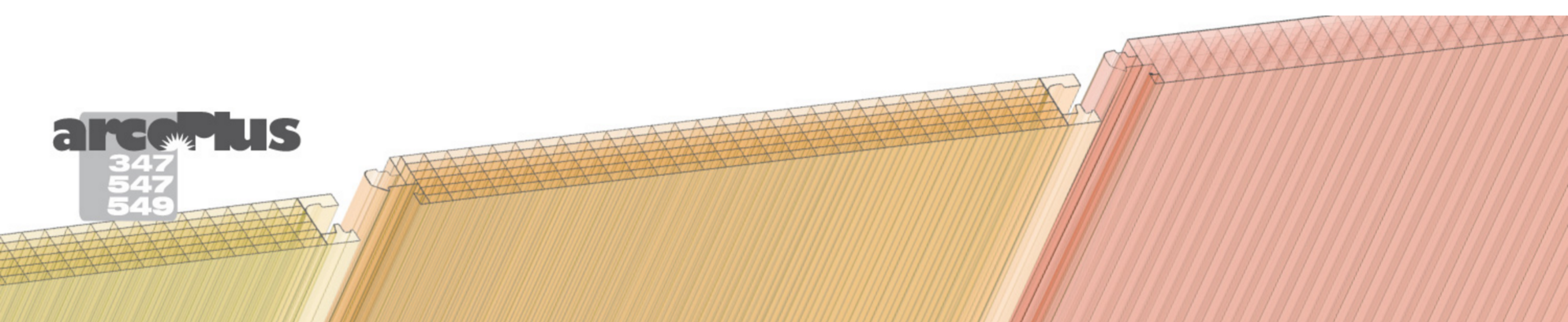


arcoPlus® 347/547/549



Modular system of multiwall UV protected polycarbonate for windows and translucent roofing applications

arcoPlus®547 and arcoPlus®549 are modular systems of coextruded 7 walls and 9 walls polycarbonate panels with a thickness of 40mm, aluminium profiles, accessories and opening windows, designed for simple and versatile use. All the systems can be used for roofing applications with a minimum slope of 7%.



Features

Advantages

- Easy and low-cost installation
- Light transmission
- Resistance to UV rays and to hail
- Thermal insulation
- High load resistance

Applications

- Vertical window
- Translucent façade insert
- Roofing

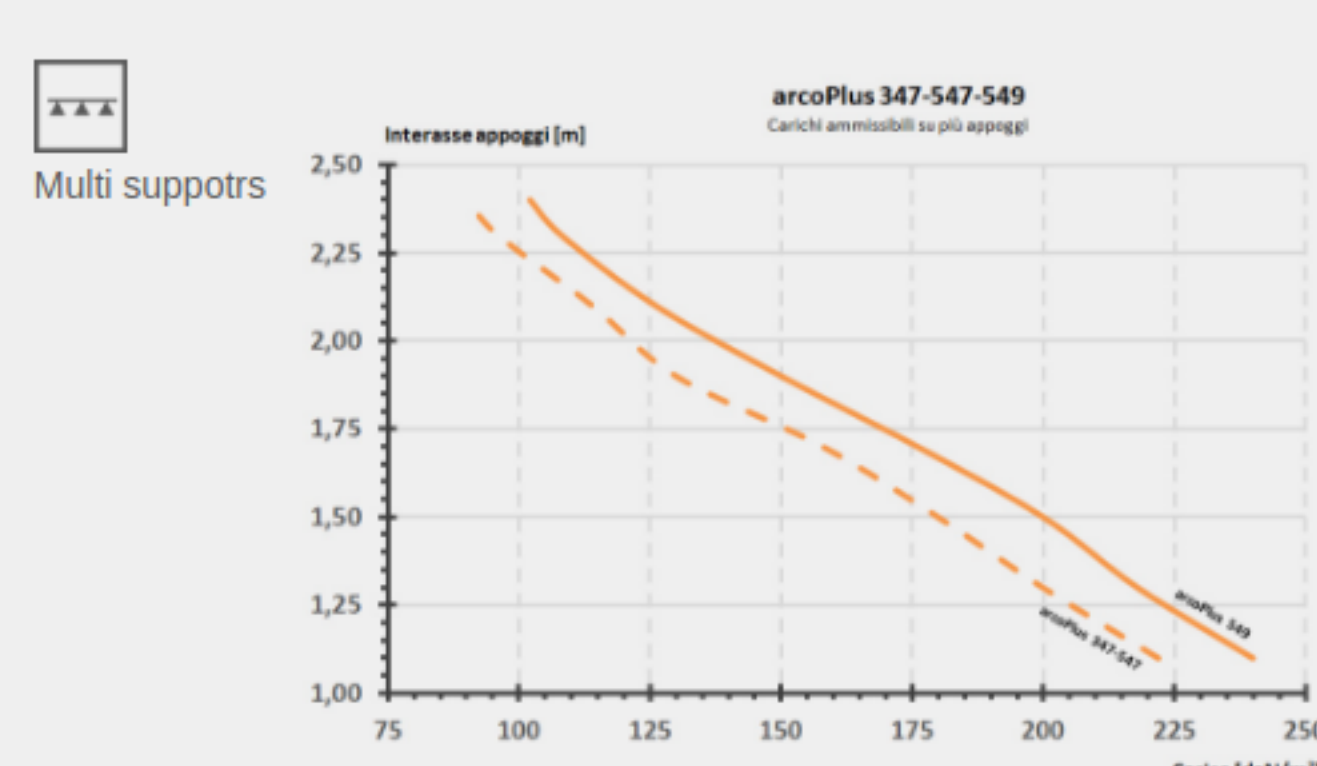
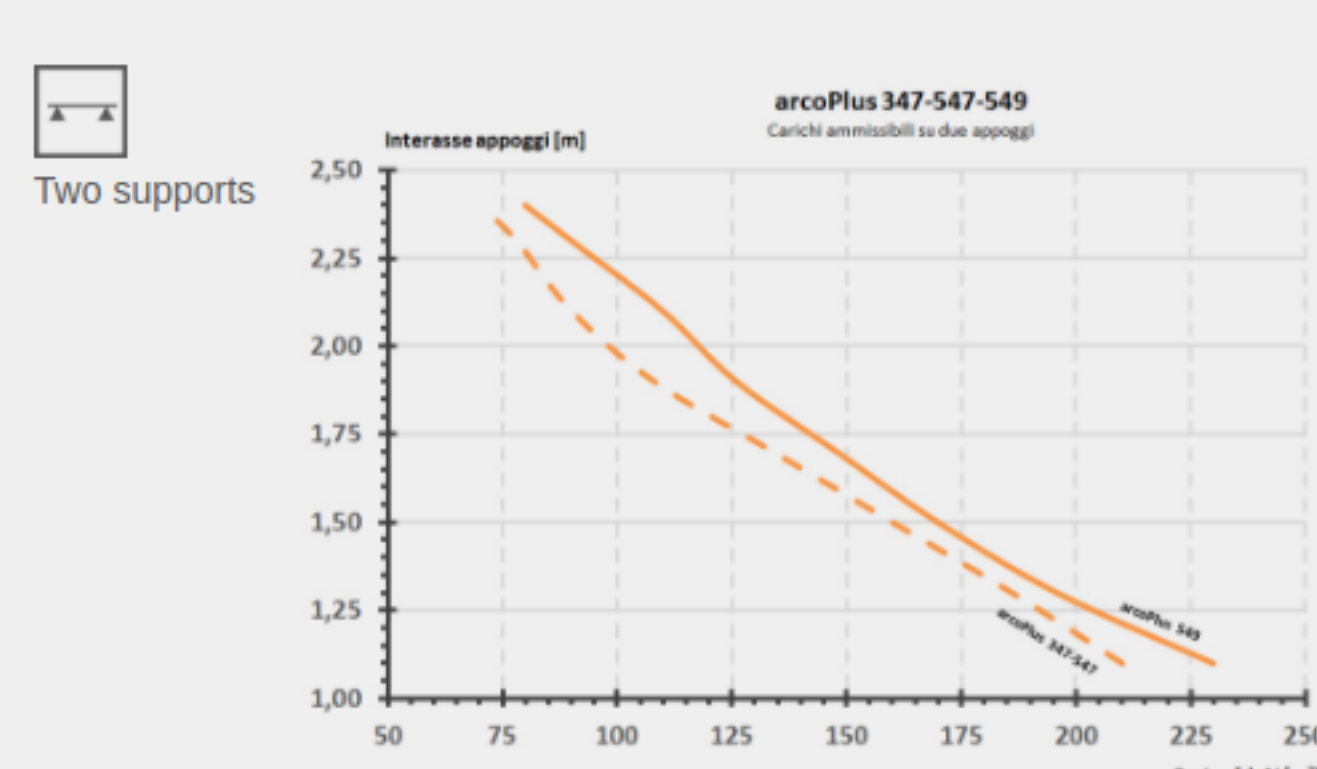
Production standards

Thickness	40mm
Structure	7 walls (347-547) - 9 walls (549)
Effective modular width	333mm (347)-500mm (547-549)
Panel length	No limits
Available colors	See page 11

Features

Thermal insulation	1,1 (347-547) - 1,0 (549) W/m ² K
Acoustic insulation	21 dB
Linear thermal expansion	0,065mm/m°C
Temperature range	-40°C +120 °C
U.V. rays protection	Coextrusion
Fire reaction EN 13501-1	EuroClass B-s1,d0

Load resistance



Certifications

CC FAT COMMISSION CHARGÉE DE FORMULER LES AVIS TECHNIQUES
arcoPlus® 547
 Document technique application N°214-1610 published on 06/11/2014

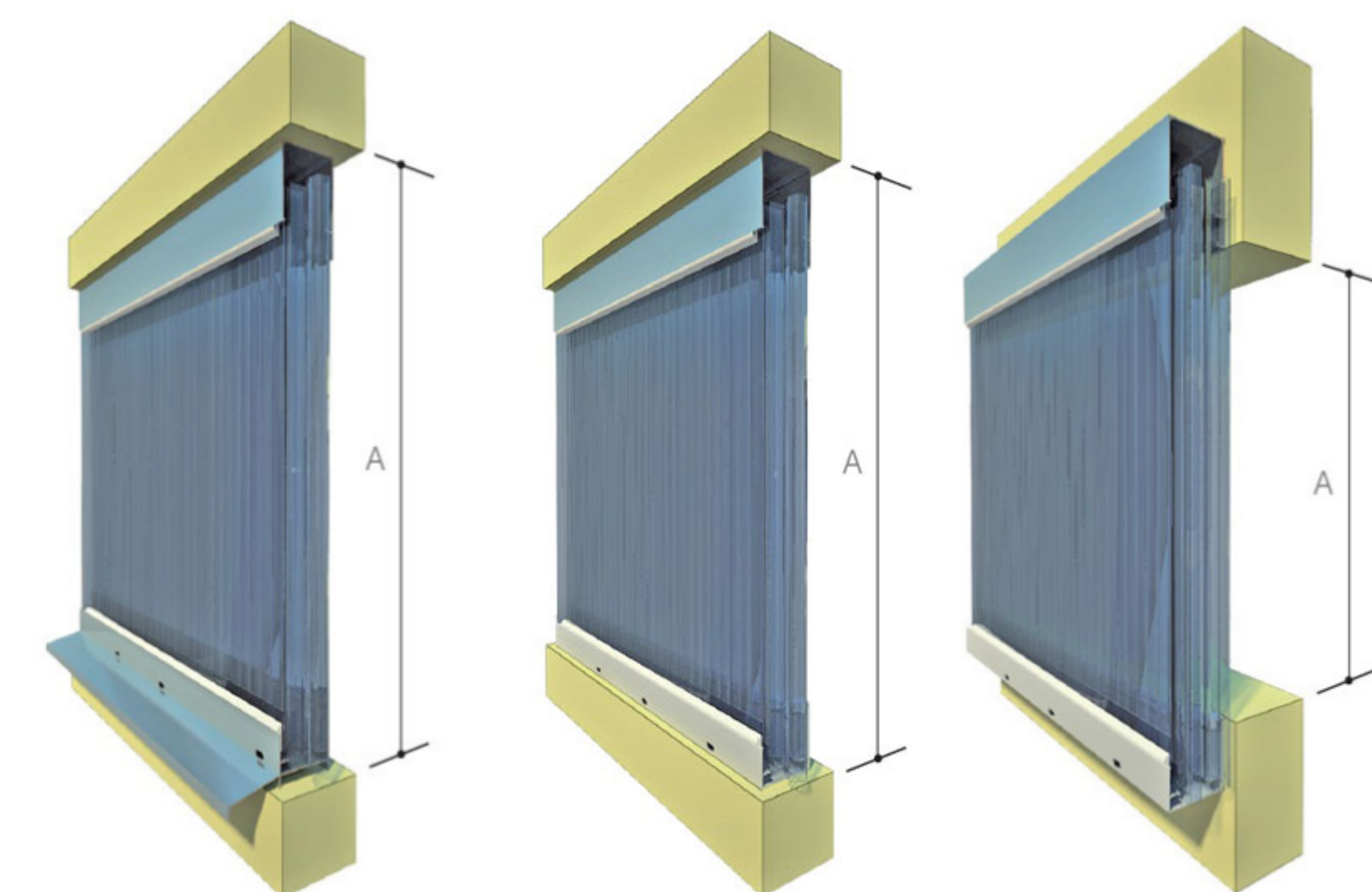
DIBt Ab Zulassung N°Z-10-480 published on 23/12/2014

Special treatments



Easy installation

The 40mm-thick, 7 walls and 9 walls design with tongue and groove connection gives the panels remarkable flexural strength. It also allows the panels to be installed without the use of metal reinforcement frames (continuous glazing), thus eliminating heat loss due to the thermal bridges caused by these structures (discontinuous glazing). For installations exceeding 2.2m, a suitable section-breaker profile must be installed to which the arcoPlus® panels can then be fixed. This is done using the specific brackets to give the system the necessary resistance to negative wind load and permit sliding due to thermal expansion (see load resistance graph).



WITH EAVE

LP = A - 50 mm
 (base profile without TT)
 LP = A - 70 mm
 (base profile with TT)
 A = opening measure

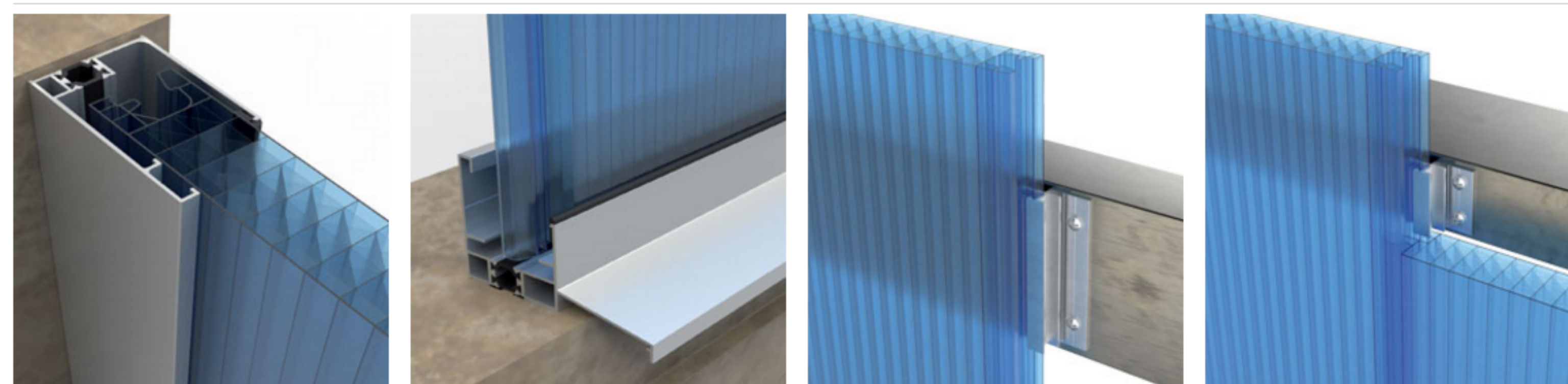
WITHOUT EAVE

LP = A - 45 mm
 (base profile without TT)
 LP = A - 60 mm
 (base profile with TT)
 A = opening measure

OUTSIDE OF THE BUILDING

LP = A + 95 mm
 A = opening measure

Assembly details



Detail side profile TT in AL

Detail base profile TT with eave in AL

Anchorage to existing structures by inserting aluminum bracket

Anchorage to existing structures by inserting aluminum bracket

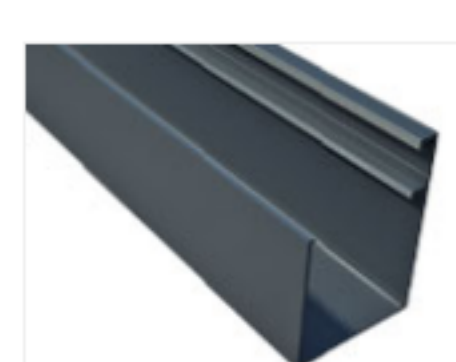
Opening systems

The arcoPlus® panels are accompanied by a wide range of accessories which allow to create fixed vertical curtain walls, moreover these products have been designed to realise windows with integrated opening systems to be inserted in horizontal shed-window or into curtain translucent wall. Please, consult the appropriate site-section to have more specific information.

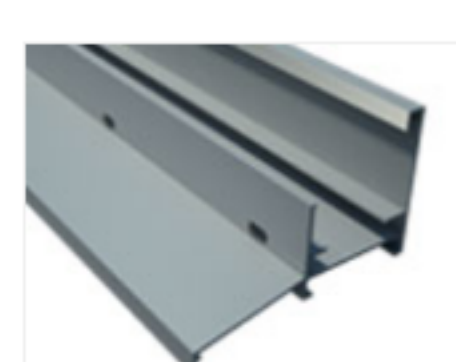
Accessories



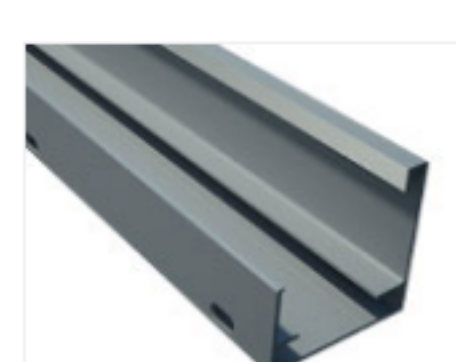
cod. 1169/b
Slip Coat Gasket



cod. 4045
Upper and side AL profile



cod. 4046
Base AL profile with eave



cod. 4047
Base AL profile



cod. 4050
Aluminium bracket



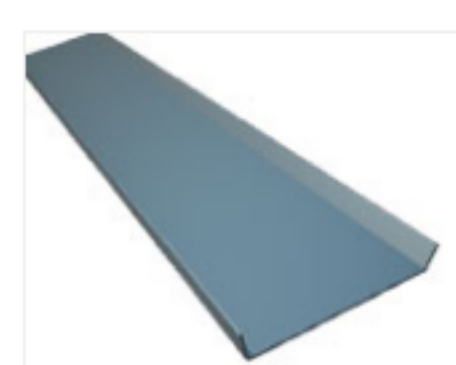
cod. 4052
inox bracket



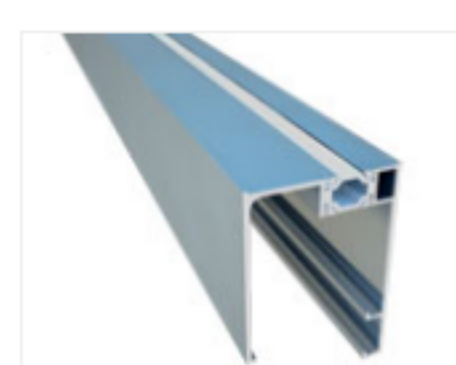
cod. 4108
Additional sealing tape



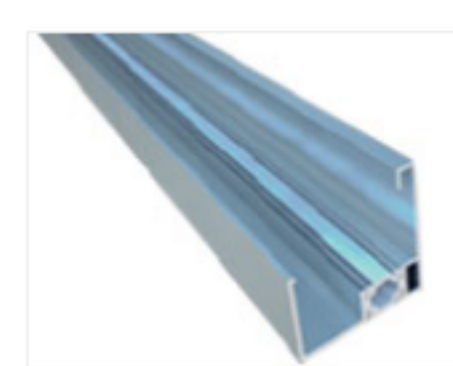
cod. 4140
Base AL profile with frontal opening



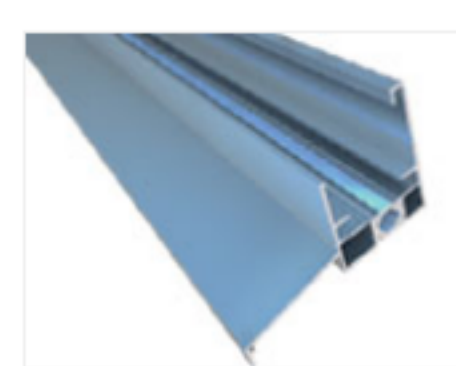
cod. 4312
Eclipse



cod. 4585
Upper and side profile TT in AL



cod. 4587
Base profile TT in AL



cod. 4590
Base profile TT with eave in AL